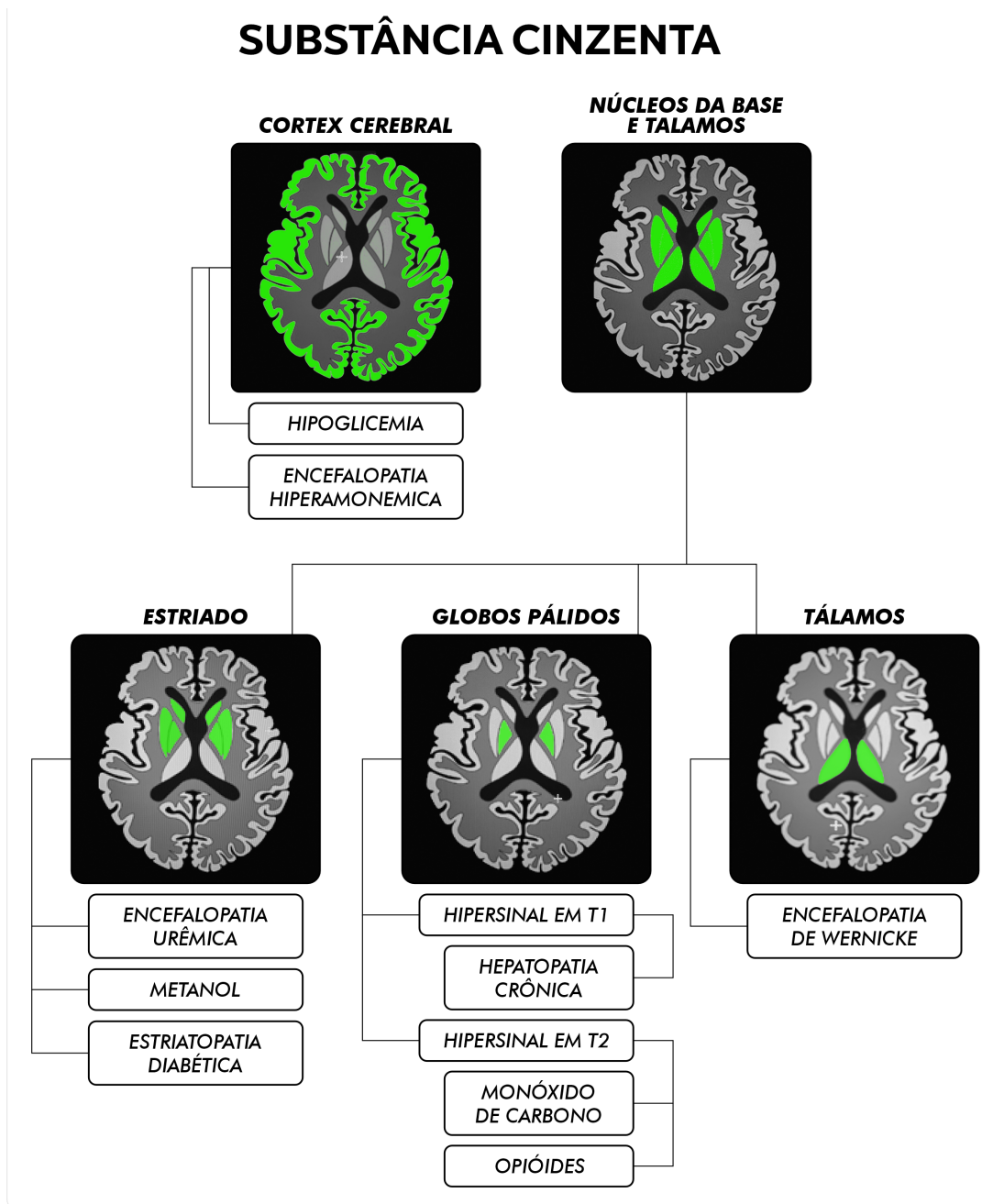


Doenças Neurometabólicas Adquiridas

Infográficos 2



Doenças Neurometabólicas Adquiridas

SUBSTÂNCIA BRANCA

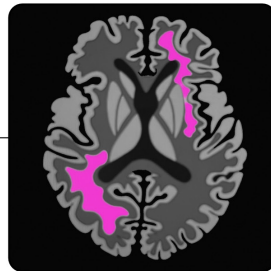
DIFUSA



HEROÍNA

SOLVENTES

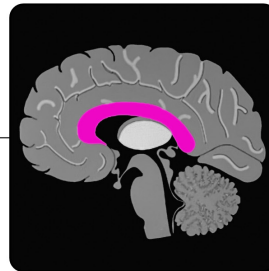
ASSIMÉTRICA



LEVAMISOL

METOTREXATO

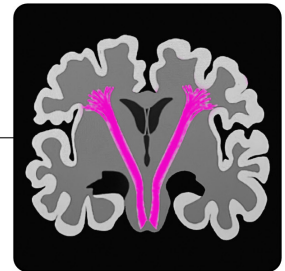
CORPO CALOSO



MARCHIAFAVA
BIGNAMI

CLOCC

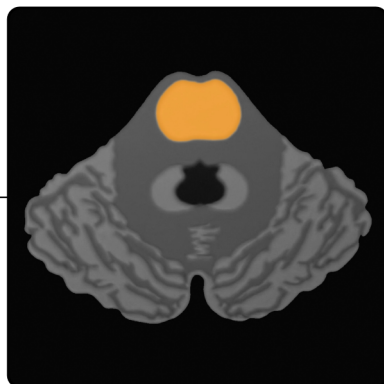
**TRATO
CÓRTICOESPINHAL**



DEFICIÊNCIA DE
VITAMINA B12

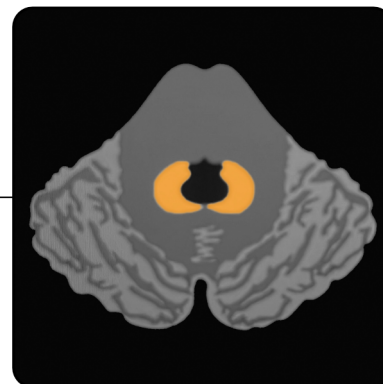
INFRATENTORIAL

TRONCO ENCEFÁLICO



MIELINÓLISE
OSMÓTICA

NÚCLEOS DENTEADOS

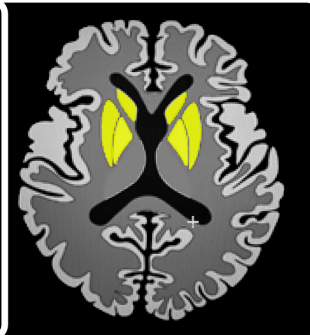
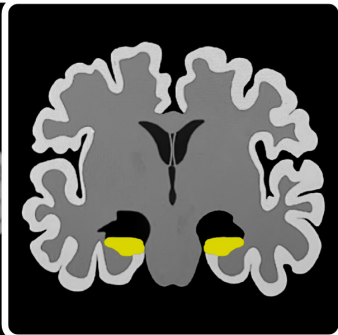
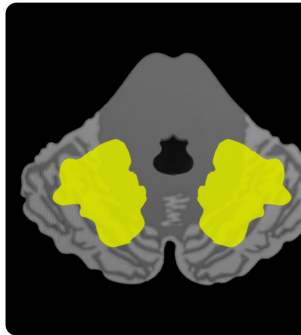


METRONIDAZOL

Doenças Neurometabólicas Adquiridas

MISTO

CHANTER



PRES

